



Die Components
Normalien
Componenti

Mercedes-Benz

















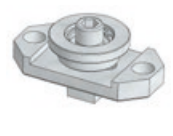


OMCR[®]
STANDARD DIE COMPONENTS



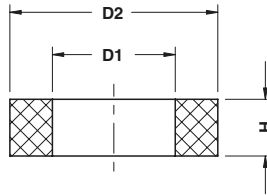
B8 0110 100 008 804	B8 0110 100 008 805	B8 0110 100 008 806	B8 0111 131 008 812	B8 0111 131 008 814
Elastomer Washer Daempfungsscheibe Rondella in elastomero	Washer Scheibe Rondella	Washer Scheibe Rondella	Key Passfeder Chiavetta	Spacer Abstimplatte Distanziale
341	341	342	342	343
B8 0111 431 008 801	B8 0161 121 008 802	B8 0162 410 008 801	B8 0301 231 108 801	B8 0441 123 408 802
Round retainer for proximity sensor Halteplatte rund für Näherungsschalter Staffa per sensore	Toe clamp Haltestück Ritegno	Bracket for lifting pin Bügel für Tragbolzen Staffa per perno di sollevamento	Bush for lifting pin Buchse für Tragbolzen Boccola per perno di sollevamento	Bush self-lubricating DIN 9834 Führungsbuchse DIN 9834 Boccola autolubrificante DIN 9834
344	344	345	345	346
B8 0450 200 009 001	B8 0450 200 009 001	B8 0450 200 009 001	B8 0450 200 009 001	B8 0460 219 008 801
Guide post Führungssäule Colonna guida	Guide Post Führungssäule Colonna Guida	Guide Post Führungssäule Colonna Guida	Guide Post Führungssäule Colonna Guida	Wear plate Gleitplatte Piastra guida
347	348	349	350	351
B8 0460 231 009 002	B8 0460 231 008 801	B8 0460 231 009 003	B8 0460 850 000 101	B8 0461 131 000 101
Wear plate Gleitplatte Piastra guida	Wear plate Gleitplatte Piastra guida	Wear plate Gleitplatte Piastra guida	Locating block Fangbacke Tassello di centraggio	"V" driver Prismenführung Guida a "V"
352	353	354	355	356

B8 0461 110 000 101	B8 0467 000 009 001	B8 0467 000 009 001	B8 0467 111 000 101	B8 0541 000 009 001
				
"V" driver Prismenführung Guida a "V" 356	Cam dwell Überlaufkeile Cuneo 357	Cam dwell Überlaufkeile Cuneo 358	Locating block Fangbacke Tassello di centraggio 359	Gage Einweiser Riferimento 359
B8 0541 000 009 003	B8 0541 000 009 005	B8 0541 000 009 007	B8 0541 000 009 008	B8 0550 100 008 801
			 RANGE EXTENSION	
Gage for sensor Einweiser für Teillagekontrolle Riferimento per sensore 360	Gage Einweiser Riferimento 360	Gage for sensor Einweiser für Teillagekontrolle Riferimento per sensore 361	Gage Einweiser Riferimento 362	Spacer Distanzscheibe Distanziale 363
B8 0561 131 008 801	B8 0561 131 008 802	B8 0561 131 008 803	B8 0561 131 008 804	B8 0561 131 008 805
				
Distance plate Abstimscheibe Distanziale 363	Distance plate Abstimscheibe Distanziale 364	Backing plate Distanzkappe Reazione per cilindro 364	Shim Ausgleichscheib Spessore 365	Stop Block Abstandsblock Distanziale 365
B8 0561 152 000 001	B8 0602 104 008 803	B8 0602 321 008 801	B8 0604 100 001 102	B8 0604 100 008 801
				
Cylinder connection plate Zylinderanschlussplatte Piastra di collegamento cilindri 366	Locating pin Zentrierbolzen Centraggio 366	Locating pin Zentrierbolzen Perno di centraggio 367	Spring pin Aufnahmebolzen Perno per molla 367	Locating cone Zentrierzapfen Cono di centraggio 368

Standard
Mercedes-Benz

B8 0604 100 008 802	B8 0624 108 800 002	B8 0624 108 800 001	B8 1001 110 008 801	B8 1013 110 008 802
				
Locating cone Zentrierzapfen Cono di centraggio 368	Locating Cone Kegelaufsatz Cono Di Centraggio 369	Locating Cone Kegelaufsatz Cono Di Centraggio 369	Spacer Abstimmsschraube Distanziale 370	Collar Screw Schulter Passschraube Vite con colletto 371
B8 1013 310 008 802	B8 1087 100 000 001	B8 1123 120 000 102	B8 1240 300 009 001	B8 2002 231 009 001
				
Retainer bolt Haltebolzen Tirante 372	Post ring Sprengring Anello per colonna 373	Elastomer spring Elastomerfeder Molla in elastomero 373	Lifting bracket VDI 3366 Tragzapfen VDI 3366 Staffa di sollevamento VDI 3366 374	Lifting Pin Tragbolzen mit Fallringsicherung Perno di sollevamento 375
B8 2002 310 008 801	B8 2002 421 008 802	B8 2002 521 008 801	B8 2002 621 008 802	B8 2002 731 000 002
				
Retainer bolt Haltebolzen Tirante 376	Pin Druckbolzen Perno 377	Pin Ankerbolzen Perno 377	Pad retainer pin Steckbolzen Perno di arresto 378	Air pin Druckbolzen Candela 378
B8 7007 000 008 808	B8 7007 000 008 809	B8 7007 000 008 810	B8 7466 100 009 001	
				
Coil guide roller Führungsrolle Guida nastro 379	Coil guide roller Führungsrolle Guida nastro 379	Coil guide roller Führungsrolle Guida nastro 380	Cam roller Rollenbock Supporto con rullo 380	

ELASTOMER WASHER - DAEMPfungSSCHEIBE - RONDELLA IN ELASTOMERO



Notes

Material: Elastomer 92 SH
 Only for replacement
 Nur für Reparatur
 Solo per riparazione

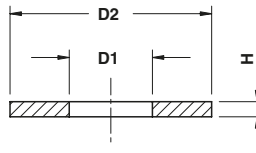
STOCK

ORDER EXAMPLE	MERCEDES-BENZ CODE
	B8 0110 0332828

MERCEDES-BENZ CODE	D1	D2	H
B8 0110 0332827	17	34	8
B8 0110 0332828	21	47	8
B8 0110 0332829	32,5	55	15
B8 0110 0373385	38,5	63	15

Standard Mercedes-Benz

WASHER - SCHEIBE - RONDELLA



Notes

Material: CK45
 Only for replacement
 Nur für Reparatur
 Solo per riparazione

STOCK

ORDER EXAMPLE	MERCEDES-BENZ CODE
	B8 0110 0332957

MERCEDES-BENZ CODE	D1	D2	H	MERCEDES-BENZ CODE	D1	D2	H	MERCEDES-BENZ CODE	D1	D2	H
B8 0110 0332956	14	40	6	B8 0110 0332962	17	80	6	B8 0110 0587878	33	60	6
B8 0110 0332957	14	50	6	B8 0110 0332963	17	80	12	B8 0110 0332945	33	80	6
B8 0110 0332958	14	50	8	B8 0110 0332964	21	50	6	B8 0110 0332946	33	100	8
B8 0110 0332959	17	36	4	B8 0110 0332965	21	100	8	B8 0110 0377008	39	100	8
B8 0110 0332960	17	60	6	B8 0110 0332966	21	100	14	B8 0110 0377011	39	110	8
B8 0110 0332961	17	60	10	B8 0110 0332967	21	120	10				

WASHER - SCHEIBE - RONDELLA



Notes

Material: CK45

STOCK



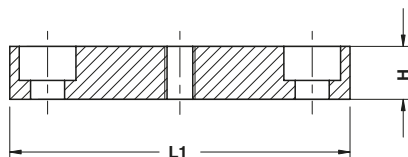
MERCEDES-BENZ CODE

B8 0110 0373388

MERCEDES-BENZ CODE

B8 0110 0373388

KEY - PASSFEDER - CHIAVETTA



Notes

Only for replacement
Nur für Reparatur
Solo per riparazione

STOCK

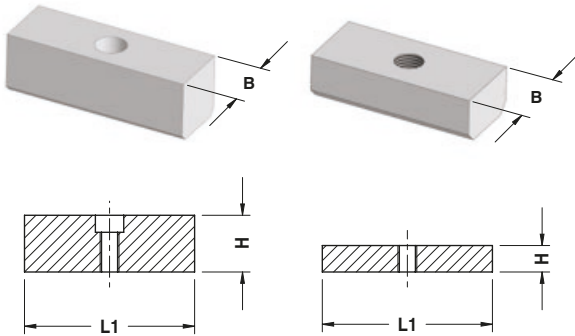


MERCEDES-BENZ CODE

B8 0111 0455442

MERCEDES-BENZ CODE	B	H	L1	Material	MERCEDES-BENZ CODE	B	H	L1	Material
B8 0111 0455258	22 0/+0,01	14	50	CK45	B8 0111 1269325	22 +0,3/+0,4	14	240	CK45
B8 0111 0455442	22 0/+0,01	14	90	CK45	B8 0111 1197100	30 h11	30	150	St37
B8 0111 0455443	22 0/+0,01	14	150	CK45	B8 0111 0370158	30 h11	30	175	St37
B8 0111 0455444	22 0/+0,01	14	240	CK45	B8 0111 1195191	30 h11	30	240	St37
B8 0111 1269321	22 +0,3/+0,4	14	50	CK45	B8 0111 0333602	30 h11	30	250	St37
B8 0111 1269322	22 +0,3/+0,4	14	90	CK45	B8 0111 0332735	22 h9	14	150	CK45
B8 0111 1269323	22 +0,3/+0,4	14	150	CK45	B8 0111 0534548	22 h9	14	240	CK45

KEY - PASSFEDER - CHIAVETTA



FORM A

FORM B

Notes

Material: CK45
 Only for replacement
 Nur für Reparatur
 Solo per riparazione

STOCK



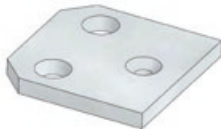
MERCEDES-BENZ CODE

B8 0111 1197103

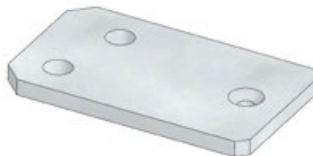
MERCEDES-BENZ CODE	B	H	L1	FORM
B8 0111 1081863	30 h11	30	100	A
B8 0111 1197103	30 h11	30	90	A
B8 0111 1081865	22 h9	14	50	B
B8 0111 1081867	22 h9	14	90	B

Standard
Mercedes-Benz

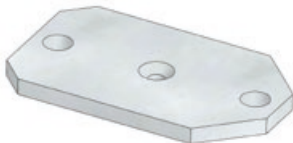
SPACER - ABSTIMMPLATTE - DISTANZIALE



B8 0111 0529571



B8 0111 0529572



B8 0111 0529573



B8 0111 0535157

Notes

Material: 90MnCrV8

STOCK



MERCEDES-BENZ CODE

B8 0111 0529572

MERCEDES-BENZ CODE
B8 0111 0529571
B8 0111 0529572
B8 0111 0529573
B8 0111 0535157

**ROUND RETAINER FOR PROXIMITY SENSOR
HALTEPLATTE RUND FÜR NÄHERUNGSSCHALTER
STAFFA PER SENSORE**



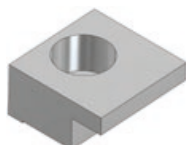
Notes
Material: St37

STOCK

	MERCEDES-BENZ CODE
	B8 0111 0277051

MERCEDES-BENZ CODE
B8 0111 0277051

TOE CLAMP - HALTESTÜCK - RITEGNO PER BOCCOLA



Notes
Material: CK45

Application example

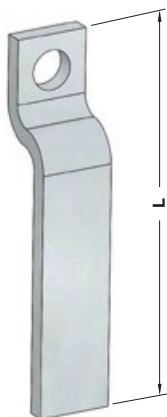
B8 0441 0331931-0331939

STOCK

	MERCEDES-BENZ CODE
	B8 0161 0331941

MERCEDES-BENZ CODE	D1
B8 0161 0331940	25÷50
B8 0161 0331941	63÷160

BRACKET FOR LIFTING PIN - BÜGEL FÜR TRAGBOLZEN - STAFFA PER PERNO DI SOLLEVAMENTO



STOCK

Notes

Material: Si37

Only for replacement
Nur für Reparatur
Solo per riparazione

Application example

B8 0162 410 008 801

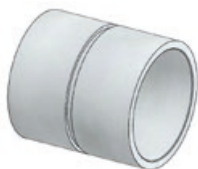
B8 2002 231 009 001

	MERCEDES-BENZ CODE
	B8 0162 0530492

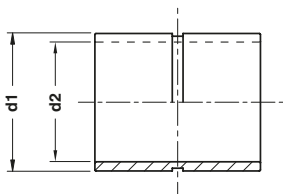
MERCEDES-BENZ CODE	L
B8 0162 0530492	100
B8 0162 1045384	82
B8 0162 1104475	90

Standard
Mercedes-Benz

BUSH FOR LIFTING PIN - BUCHSE FÜR TRAGBOLZEN - BOCCOLA PER PERNO DI SOLLEVAMENTO



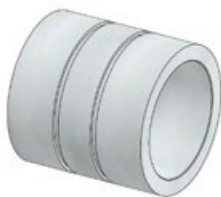
FORM A



Notes

Material: Si35

STOCK

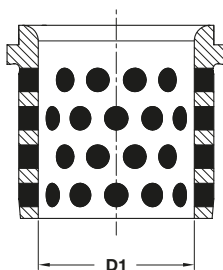


FORM B

	MERCEDES-BENZ CODE
	B8 0301 0274833

MERCEDES-BENZ CODE	d1	d2	FORM
B8 0301 0274828	44	34	A
B8 0301 0274833	52	42	A
B8 0301 0274835	62	52	A
B8 0301 0274836	75	65	A
B8 0301 0274838	100	78	B
B8 0301 0274842	105	78	B

**BUSH SELF-LUBRICATING DIN 9834
 FÜHRUNGSBUCHSE DIN 9834
 BOCCOLA AUTOLUBRIFICANTE DIN 9834**



Notes
Material: Bronze + Graphite
HB > 190



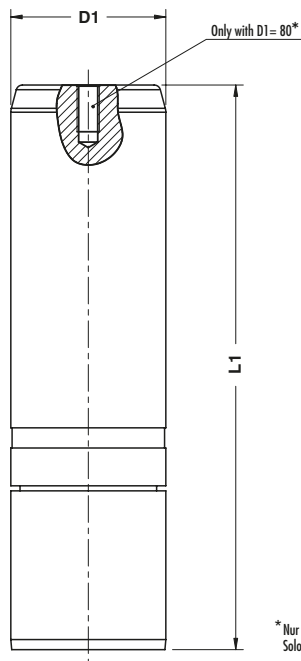
	MERCEDES-BENZ CODE
	B8 0441 0331932

MERCEDES-BENZ CODE	D1
B8 0441 0331931	25
B8 0441 0331932	32
B8 0441 0331933	40
B8 0441 0331934	50
B8 0441 0331935	63
B8 0441 0331936	80
B8 0441 0331937	100
B8 0441 0331938	125
B8 0441 0331939	160

GUIDE POST - FÜHRUNGSSÄULE - COLONNA GUIDA

Notes

Material: 16MnCr5 - **HRC:** 60÷62



Standard Mercedes-Benz

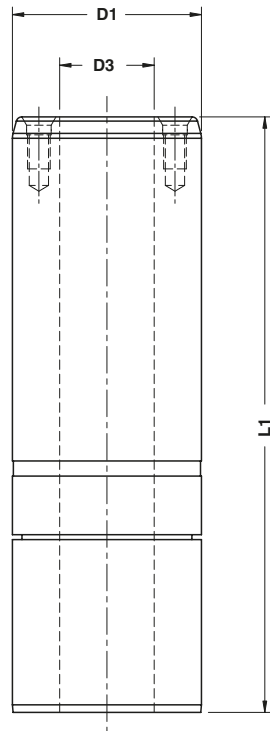


MERCEDES-BENZ CODE
B8 0450 0333406

MERCEDES-BENZ CODE	D1	L1	MERCEDES-BENZ CODE	D1	L1	MERCEDES-BENZ CODE	D1	L1
B8 0450 0333405	40	160	B8 0450 0333415	50	250	B8 0450 0333425	63	355
B8 0450 0333406	40	180	B8 0450 0333416	50	280	B8 0450 0333426	63	400
B8 0450 0333407	40	200	B8 0450 0333417	50	315	B8 0450 0333427	80	224
B8 0450 0333408	40	224	B8 0450 0333418	50	355	B8 0450 0333428	80	250
B8 0450 0333409	40	250	B8 0450 0333419	63	180	B8 0450 0333429	80	280
B8 0450 0333410	40	280	B8 0450 0333420	63	200	B8 0450 0333430	80	315
B8 0450 0333411	50	160	B8 0450 0333421	63	224	B8 0450 0333431	80	355
B8 0450 0333412	50	180	B8 0450 0333422	63	250	B8 0450 0333432	80	400
B8 0450 0333413	50	200	B8 0450 0333423	63	280			
B8 0450 0333414	50	224	B8 0450 0333424	63	315			

GUIDE POST - FÜHRUNGSSÄULE - COLONNA GUIDA

Notes
Material: 16MnCr5 - **HRC:** 60÷62



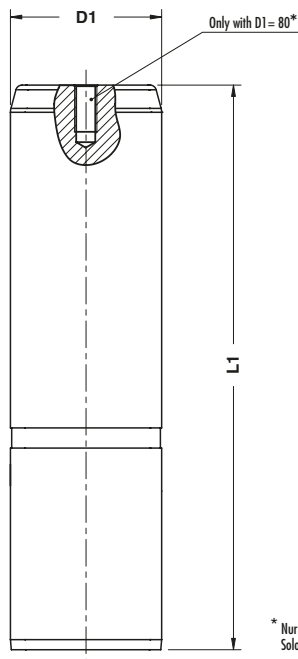
MERCEDES-BENZ CODE
B8 0450 0333434

MERCEDES-BENZ CODE	D1	D3	L1	MERCEDES-BENZ CODE	D1	D3	L1	MERCEDES-BENZ CODE	D1	D3	L1
B8 0450 0333433	100	50	280	B8 0450 0333437	125	65	355	B8 0450 0333440	160	95	450
B8 0450 0333434	100	50	315	B8 0450 0333438	125	65	400	B8 0450 0333441	160	95	500
B8 0450 0333435	100	50	355	B8 0450 0333439	125	65	450	B8 0450 0333442	160	95	560
B8 0450 0333436	100	50	400	B8 0450 0584356	160	95	400				

GUIDE POST - FÜHRUNGSSÄULE - COLONNA GUIDA

Notes

Material: 16MnCr5 - HRC: 60÷62



* Nur mit D1 = 80
Solo per D1 = 80



MERCEDES-BENZ CODE

B8 0450 0528717

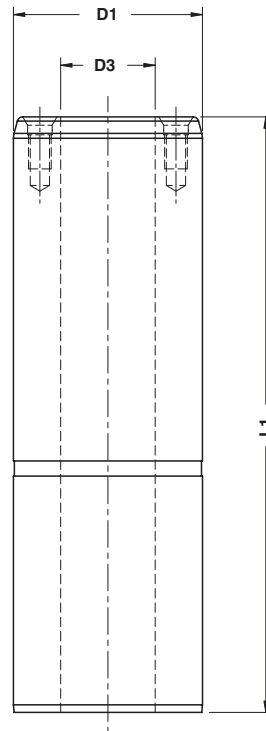
MERCEDES-BENZ CODE	D1	L1	MERCEDES-BENZ CODE	D1	L1	MERCEDES-BENZ CODE	D1	L1
B8 0450 0528716	25	125	B8 0450 0332526	40	250	B8 0450 0332537	63	250
B8 0450 0528717	25	140	B8 0450 0333401	40	280	B8 0450 0332538	63	280
B8 0450 0528718	25	160	B8 0450 0332527	50	160	B8 0450 0332539	63	315
B8 0450 0528719	25	180	B8 0450 0332528	50	180	B8 0450 0332540	63	355
B8 0450 0531827	32	140	B8 0450 0332529	50	200	B8 0450 0332541	63	400
B8 0450 0332519	32	160	B8 0450 0332530	50	224	B8 0450 0332542	80	224
B8 0450 0332520	32	180	B8 0450 0332531	50	250	B8 0450 0332543	80	250
B8 0450 0332521	32	200	B8 0450 0332532	50	280	B8 0450 0332544	80	280
B8 0450 0531828	40	140	B8 0450 0332533	50	315	B8 0450 0332545	80	315
B8 0450 0332522	40	160	B8 0450 0332639	50	355	B8 0450 0332546	80	355
B8 0450 0332523	40	180	B8 0450 0332534	63	180	B8 0450 0332547	80	400
B8 0450 0332524	40	200	B8 0450 0332535	63	200			
B8 0450 0332525	40	224	B8 0450 0332536	63	224			

Standard
Mercedes-Benz

GUIDE POST - FÜHRUNGSSÄULE - COLONNA GUIDA

Notes

Material: 16MnCr5 - **HRC:** 60÷62



MERCEDES-BENZ CODE

B8 0450 0332549

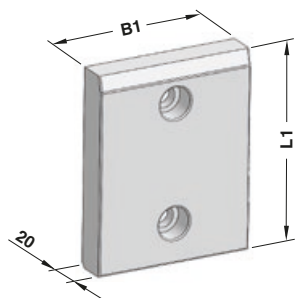
MERCEDES-BENZ CODE	D1	D3	L1	MERCEDES-BENZ CODE	D1	D3	L1	MERCEDES-BENZ CODE	D1	D3	L1
B8 0450 0332548	100	50	280	B8 0450 0332552	125	65	355	B8 0450 0332555	160	95	450
B8 0450 0332549	100	50	315	B8 0450 0332553	125	65	400	B8 0450 0332556	160	95	500
B8 0450 0332550	100	50	355	B8 0450 0332554	125	65	450	B8 0450 0332557	160	95	560
B8 0450 0332551	100	50	400	B8 0450 0584357	160	95	400				

WEAR PLATE STEEL - GLEITPLATTE STAHL - PIASTRA GUIDA IN ACCIAIO

Notes

Material: 16MnCr5

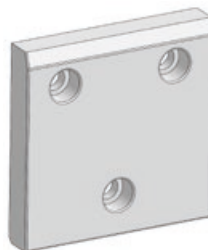
HRC: 60±62



FORM A



FORM B



FORM C

Standard
Mercedes-Benz

ORDER EXAMPLE	MERCEDES-BENZ CODE
	B8 0460 0332861

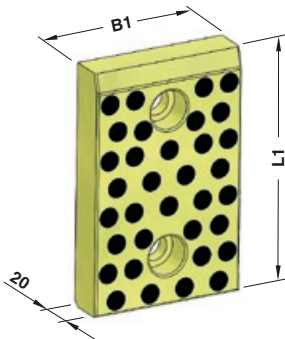
MERCEDES-BENZ CODE	B1	L1	FORM	MERCEDES-BENZ CODE	B1	L1	FORM
B8 0460 0332860	60	80	A	B8 0460 0332875	110	160	A
B8 0460 0332861	60	100	A	B8 0460 0332876	110	200	A
B8 0460 0332862	60	125	A	B8 0460 0332877	135	50	B
B8 0460 0332863	60	160	A	B8 0460 0332878	135	80	B
B8 0460 0332864	60	200	A	B8 0460 0332879	135	100	C
B8 0460 0332865	90	50	B	B8 0460 0332880	135	125	C
B8 0460 0332866	90	80	A	B8 0460 0332881	135	160	C
B8 0460 0332867	90	100	A	B8 0460 0332882	135	200	C
B8 0460 0332868	90	125	A	B8 0460 0332883	170	50	B
B8 0460 0332869	90	160	A	B8 0460 0332884	170	80	B
B8 0460 0332870	90	200	A	B8 0460 0332885	170	100	C
B8 0460 0332871	110	50	B	B8 0460 0332886	170	125	C
B8 0460 0332872	110	80	B	B8 0460 0332887	170	160	C
B8 0460 0332873	110	100	A	B8 0460 0332888	170	200	C
B8 0460 0332874	110	125	A				

**WEAR PLATE SELF-LUBRICATING VDI 3357
GLEITPLATTE BRONZE MIT FESTSCHMIERSTOFF VDI 3357
PIASTRA GUIDA AUTOLUBRIFICANTE VDI 3357**

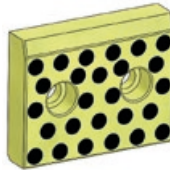
Notes

Material: Bronze + Graphite
HB > 190

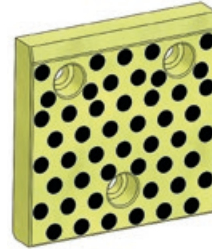
STOCK



FORM A



FORM B



FORM C

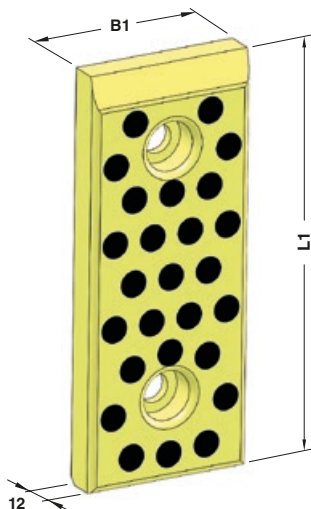
	MERCEDES-BENZ CODE
	B8 0460 0332588

MERCEDES-BENZ CODE	B1	L1	FORM	MERCEDES-BENZ CODE	B1	L1	FORM
B8 0460 0332587	50	80	A	B8 0460 0332602	100	160	A
B8 0460 0332588	50	100	A	B8 0460 0332603	100	200	A
B8 0460 0332589	50	125	A	B8 0460 0332604	125	50	B
B8 0460 0332590	50	160	A	B8 0460 0332605	125	80	B
B8 0460 0332591	50	200	A	B8 0460 0332606	125	100	C
B8 0460 0332592	80	50	B	B8 0460 0332607	125	125	C
B8 0460 0332593	80	80	A	B8 0460 0332608	125	160	C
B8 0460 0332594	80	100	A	B8 0460 0332609	125	200	C
B8 0460 0332595	80	125	A	B8 0460 0332610	160	50	B
B8 0460 0332596	80	160	A	B8 0460 0332611	160	80	B
B8 0460 0332597	80	200	A	B8 0460 0332612	160	100	C
B8 0460 0332598	100	50	B	B8 0460 0332613	160	125	C
B8 0460 0332599	100	80	B	B8 0460 0332614	160	160	C
B8 0460 0332600	100	100	A	B8 0460 0332615	160	200	C
B8 0460 0332601	100	125	A				

**WEAR PLATE SELF-LUBRICATING VDI 3357
GLEITPLATTE BRONZE MIT FESTSCHMIERSTOFF VDI 3357
PIASTRA GUIDA AUTOLUBRIFICANTE VDI 3357**

Notes

Material: Bronze + Graphite
HB > 190



Standard
Mercedes-Benz

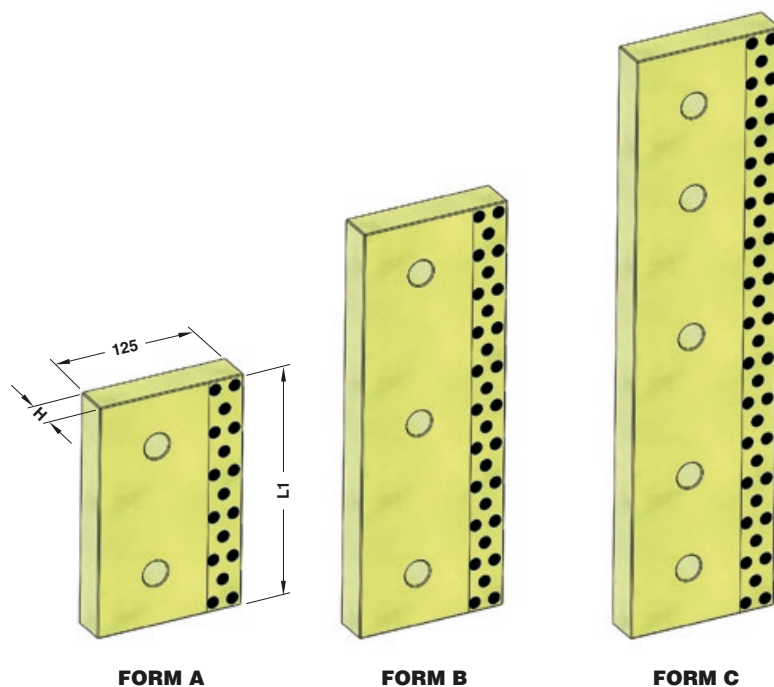
	MERCEDES-BENZ CODE
	B8 0460 0333604

MERCEDES-BENZ CODE	B1	L1	MERCEDES-BENZ CODE	B1	L1
B8 0460 0333603	30	80	B8 0460 0333613	60	80
B8 0460 0333604	30	100	B8 0460 0333614	60	100
B8 0460 0333605	30	125	B8 0460 0333615	60	125
B8 0460 0333606	30	160	B8 0460 0333616	60	160
B8 0460 0333607	30	200	B8 0460 0333617	60	200
B8 0460 0333608	40	80	B8 0460 0789442	80	80
B8 0460 0333609	40	100	B8 0460 0789444	80	100
B8 0460 0333610	40	125	B8 0460 0789446	80	125
B8 0460 0333611	40	160	B8 0460 0789447	80	160
B8 0460 0333612	40	200	B8 0460 0789448	80	200

**WEAR PLATE SELF-LUBRICATING
GLEITPLATTE BRONZE MIT FESTSCHMIERSTOFF
PIASTRA GUIDA AUTOLUBRIFICANTE**

Notes

Material: Bronze + Graphite
HB > 190



ORDER EXAMPLE 	MERCEDES-BENZ CODE
	B8 0460 0528244

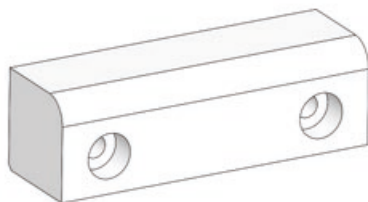
MERCEDES-BENZ CODE	H	L1	FORM	MERCEDES-BENZ CODE	H	L1	FORM	MERCEDES-BENZ CODE	H	L1	FORM
B8 0460 0528243	25	160	A	B8 0460 0528246	25	400	C	B8 0460 0528249	30	250	B
B8 0460 0528244	25	200	A	B8 0460 0528247	30	160	A	B8 0460 0528250	30	400	C
B8 0460 0528245	25	250	B	B8 0460 0528248	30	200	B				

LOCATING BLOCK - FANGBACKE - TASSELLO DI CENTRAGGIO

Notes

Material: Polyamide PA6

STOCK



MERCEDES-BENZ CODE

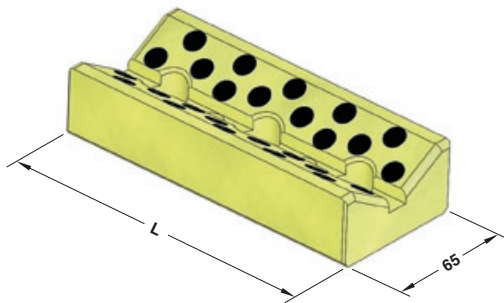
B8 0460 0331968

MERCEDES-BENZ CODE

B8 0460 0331968

Standard
Mercedes-Benz

**"V" DRIVER SELF-LUBRICATING
PRISMENFÜHRUNG BRONZE MIT FESTSCHMIERSTOFF
GUIDA A "V" AUTOLUBRIFICANTE**



Notes

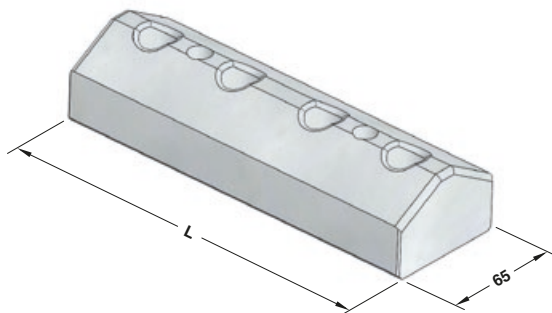
Material: Bronze + Graphite
HB > 190



MERCEDES-BENZ CODE
B8 0461 0330550

MERCEDES-BENZ CODE	L
B8 0461 0330549	150
B8 0461 0330550	200
B8 0461 0330551	250
B8 0461 0330552	300

"V" DRIVER STEEL - PRISMENFÜHRUNG STAHL - GUIDA A "V" IN ACCIAIO



Notes

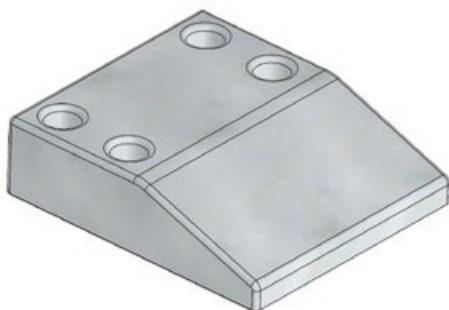
Material: CK45
HRC: 58÷60



MERCEDES-BENZ CODE
B8 0461 0330554

MERCEDES-BENZ CODE	L
B8 0461 0330553	150
B8 0461 0330554	200
B8 0461 0330555	250
B8 0461 0330556	300

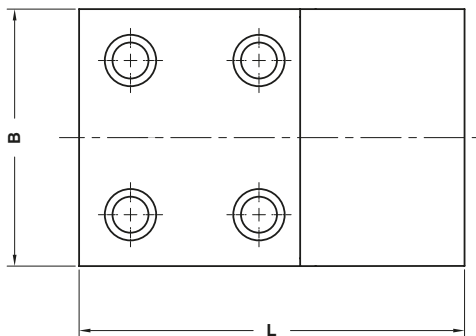
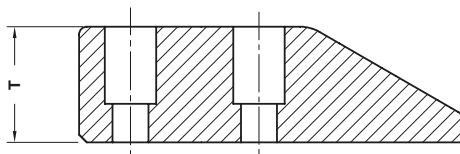
CAM DWELL STEEL
UBERLAUFKEILE STAHL
CUNEO IN ACCIAIO



Notes
Material: X155CrVMo121KU
HRC: 58÷62

STOCK

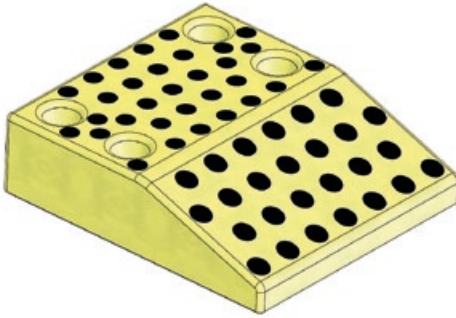
Standard
Mercedes-Benz



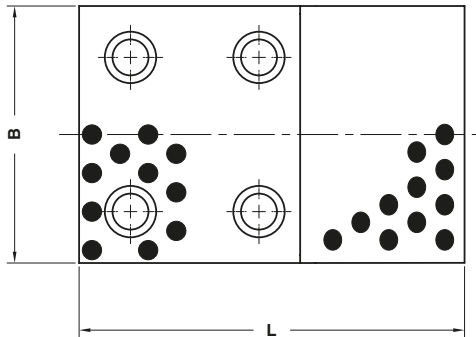
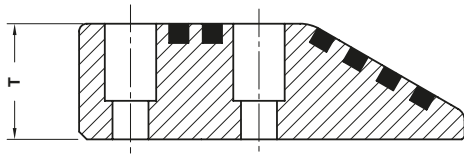
MERCEDES-BENZ CODE
B8 0467 0528448

MERCEDES-BENZ CODE	B	L	T
B8 0467 0528447	100	150	45
B8 0467 0528448	100	170	60
B8 0467 0528449	125	150	45
B8 0467 0528450	125	170	60
B8 0467 0528451	150	150	45
B8 0467 0528452	150	170	60

CAM DWELL WEAR PLATE SELF-LUBRICATING
UBERLAUFKEILE BRONZE MIT FESTSCHMIERSTOFF
CUNEO AUTOLUBRIFICANTE



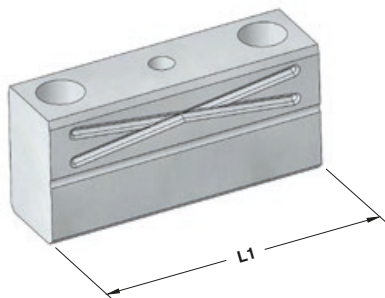
Notes
Material: Bronze + Graphite
HB > 190



	MERCEDES-BENZ CODE
	B8 0467 0528753

MERCEDES-BENZ CODE	B	L	T
B8 0467 0528752	100	150	45
B8 0467 0528753	100	170	60
B8 0467 0528754	125	150	45
B8 0467 0528755	125	170	60
B8 0467 0528756	150	150	45
B8 0467 0528757	150	170	60

LOCATING BLOCK - FANGBACKE - TASSELLO DI CENTRAGGIO



Notes

Material: 16MnCr5

HRC: 60±62

STOCK



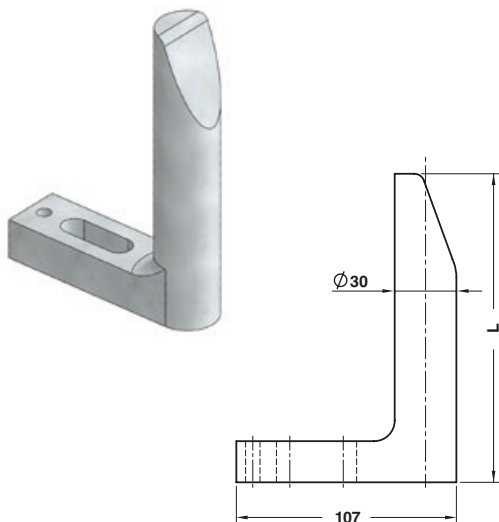
MERCEDES-BENZ CODE

B8 0467 0091639

MERCEDES-BENZ CODE	L1
B8 0467 0091638	100
B8 0467 0091639	160

Standard
Mercedes-Benz

GAGE - EINWEISER - RIFERIMENTO



Notes

Material: CK60

STOCK

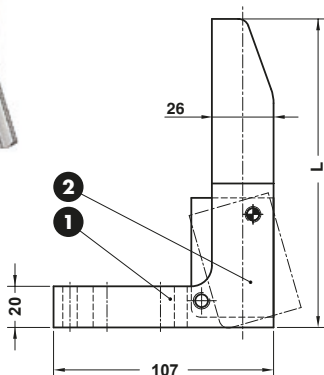
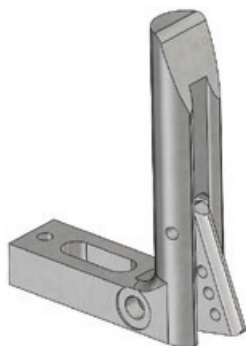


MERCEDES-BENZ CODE

B8 0541 0332635

MERCEDES-BENZ CODE	L
B8 0541 0332634	65
B8 0541 0332635	90
B8 0541 0332636	120
B8 0541 0332637	150
B8 0541 0332638	180
B8 0541 0332641	250

GAGE FOR SENSOR - EINWEISER FÜR TEILLAGEKONTROLLE - RIFERIMENTO PER SENSORE



Notes

- 1 Material:** CK60
- 2 Material:** St37 - **HRC:** 58±60

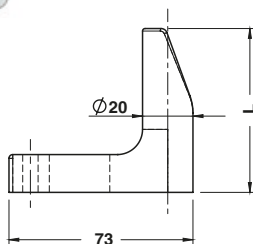
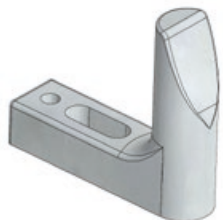
Only for replacement
Nur für Reparatur
Solo per riparazione



MERCEDES-BENZ CODE
B8 0541 0574962

MERCEDES-BENZ CODE	L
B8 0541 0574961	120
B8 0541 0574962	150
B8 0541 0574963	180
B8 0541 0574964	250

GAGE - EINWEISER - RIFERIMENTO



Notes

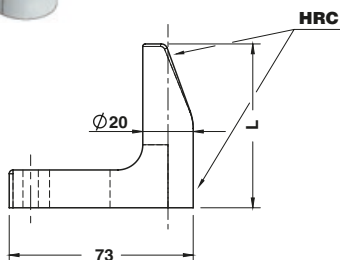
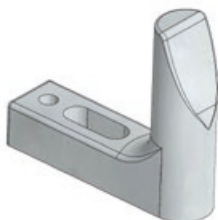
Material: CK60



MERCEDES-BENZ CODE
B8 0541 0093838

MERCEDES-BENZ CODE	L
B8 0541 0093836	65
B8 0541 0093838	90

GAGE HARDENED - EINWEISER GEHÄRTET - RIFERIMENTO INDURITO



Notes

Material: CK60 - HRC: 58÷60



MERCEDES-BENZ CODE

B8 0541 0093840

MERCEDES-BENZ CODE

L

B8 0541 0093839

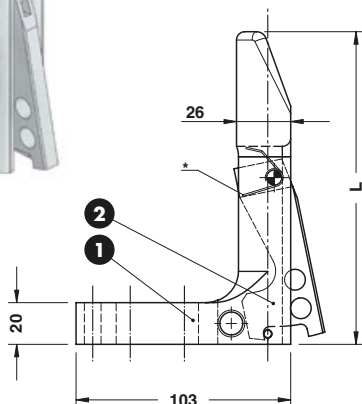
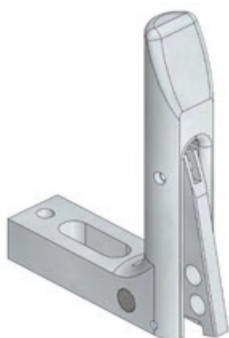
65

B8 0541 0093840

90

Standard Mercedes-Benz

GAGE FOR SENSOR - EINWEISER FÜR TEILLAGEKONTROLLE - RIFERIMENTO PER SENSORE



Notes

- 1 Material: CK60
- 2 Material: Si37 - HRC: 58÷60



*Spring - Feder - Molla



MERCEDES-BENZ CODE

B8 0541 1049306

MERCEDES-BENZ CODE

L

B8 0541 1049305

120

B8 0541 1049306

150

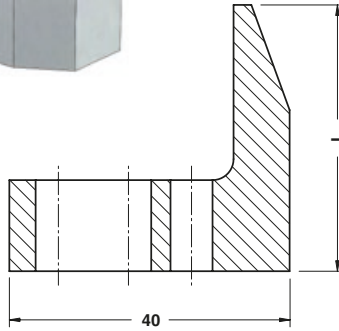
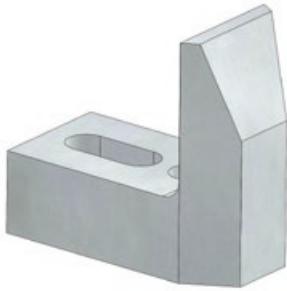
B8 0541 1049307

180

B8 0541 1049308

250

GAGE - EINWEISER - RIFERIMENTO



Notes

Material: 21MnCr5 - **HRC:** 58÷60

STOCK

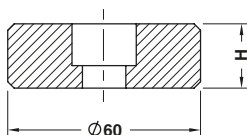
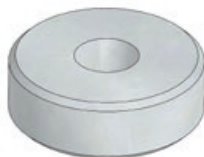


MERCEDES-BENZ CODE

B8 0541 1086749

BMW CODE		L
B8 0541 1086747		28
B8 0541 1086749		38
B8 0541 1086750		48
B8 0541 138392		58
B8 0541 138393		68
B8 0541 138395		78

SPACER - DISTANZSCHEIBE - DISTANZIALE



Notes

Material: CK45

STOCK



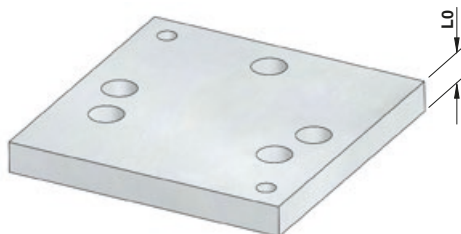
MERCEDES-BENZ CODE

B8 0550 0333523

MERCEDES-BENZ CODE	H
B8 0550 0333522	20
B8 0550 0333523	30
B8 0550 0528689	40

Standard Mercedes-Benz

DISTANCE PLATE - ABSTIMMSCHEIBE - DISTANZIALE



Notes

Material: St37

Only for replacement
Nur für Reparatur
Solo per riparazione

STOCK

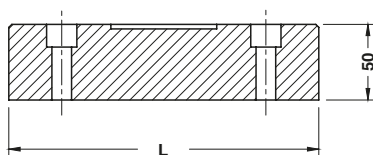
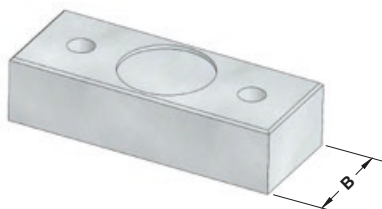


MERCEDES-BENZ CODE

B8 0561 0565393

MERCEDES-BENZ CODE	L0
B8 0561 0331204	10
B8 0561 0565393	11
B8 0561 0565396	12

DISTANCE PLATE - ABSTIMMSCHEIBE - DISTANZIALE



Notes

Material: St37
 Only for replacement
 Nur für Reparatur
 Solo per riparazione

STOCK

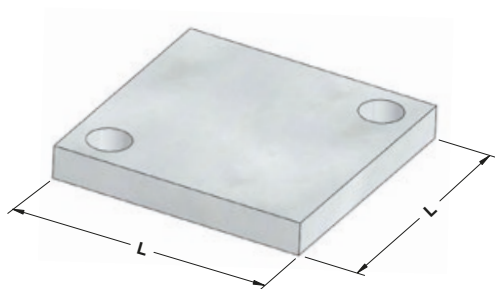


MERCEDES-BENZ CODE

B8 0561 0331960

MERCEDES-BENZ CODE	B	L
B8 0561 0331959	80	205
B8 0561 0331960	100	245
B8 0561 0331961	120	305

BACKING PLATE - DRUCKPLATTE - REAZIONE PER CILINDRO



Notes

Material: 90MnCrV8
HRC: 49÷52

STOCK



MERCEDES-BENZ CODE

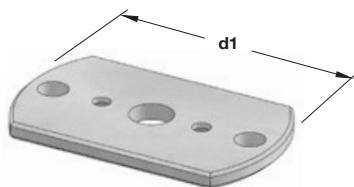
B8 0561 0544586

MERCEDES-BENZ CODE	L
B8 0561 0347055	90
B8 0561 0544586	60
B8 0561 0343592	100

SHIM - ABSTIMMSCHEIBE - SPESSORE



FORM A



FORM B

Notes

Material: CK45

STOCK



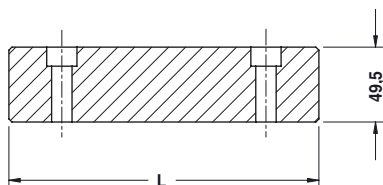
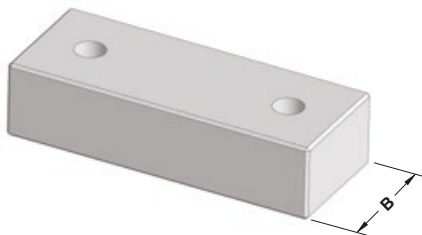
MERCEDES-BENZ CODE

B8 0561 0372843

MERCEDES-BENZ CODE	d1	FORM
B8 0561 0372843	100	A
B8 0561 0345926	100	B

Standard Mercedes-Benz

STOP BLOCK - ABSTANDBLOCK - DISTANZIALE



Notes

Material: CK45

STOCK

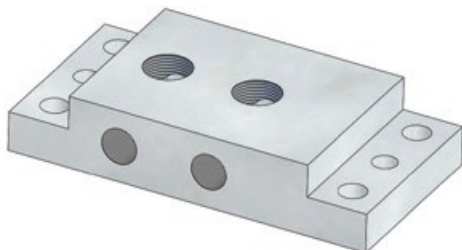


MERCEDES-BENZ CODE

B8 0561 0376641

MERCEDES-BENZ CODE	B	L
B8 0561 0377769	80	155
B8 0561 0376641	80	205
B8 0561 0376642	100	245

CYLINDER CONNECTION PLATE
ZYLINDERANSCHLUSSPLATTE
PIASTRA DI COLLEGAMENTO CILINDRI

**Notes****Material:** CK45

Only for replacement
 Nur für Reparatur
 Solo per riparazione

STOCK

**MERCEDES-BENZ CODE**

B8 0561 0544587

MERCEDES-BENZ CODE

B8 0561 0544587

LOCATING PIN - ZENTRIERBOLZEN - CENTRAGGIO

**Notes****Material:** 16MnCr5**HRC:** 60÷62

STOCK

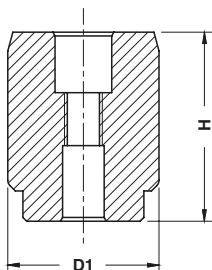
**MERCEDES-BENZ CODE**

B8 0602 0533447

MERCEDES-BENZ CODE

B8 0602 0533447

LOCATING PIN - ZENTRIERBOLZEN - PERNO DI CENTRAGGIO



Notes

Material: 16MnCr5 - HRC: 60÷62

STOCK



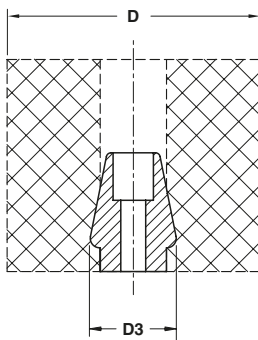
MERCEDES-BENZ CODE

B8 0602 0333315

MERCEDES-BENZ CODE	D1	H
B8 0602 1061335	11	70
B8 0602 0333314	22	50
B8 0602 0333315	25	50
B8 0602 0333316	32	50
B8 0602 1061342	15	70
B8 0602 0333317	40	50
B8 0602 0333318	50	50

Standard Mercedes-Benz

SPRING PIN - AUFNAHMEBOLZEN - PERNO PER MOLLA



Notes

Material: CK45

STOCK



MERCEDES-BENZ CODE

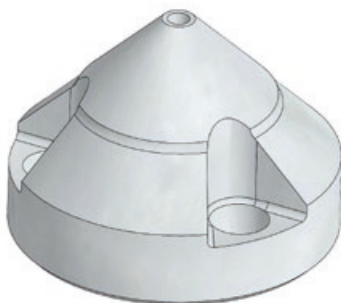
B8 0604 0333553

MERCEDES-BENZ CODE	D	D3
B8 0604 0333552	63	28
B8 0604 0333553	80÷100	32
B8 0604 0333554	125÷140	38

LOCATING CONE - ZENTRIERZAPFEN - CONO DI CENTRAGGIO



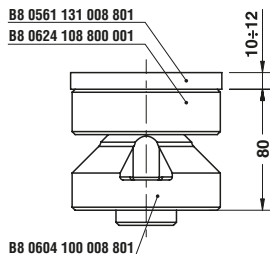
Only for replacement
Nur für Reparatur
Solo per riparazione



Notes

Material: 100Cr6 - **HRC:** 63÷65

Application example



MERCEDES-BENZ CODE

B8 0604 0331202

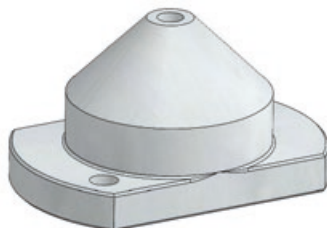
MERCEDES-BENZ CODE

B8 0604 0331202

LOCATING CONE - ZENTRIERZAPFEN - CONO DI CENTRAGGIO



FORM A



FORM B

Notes

Material: 16MnCr5 - **HRC:** 60÷64

STOCK



MERCEDES-BENZ CODE

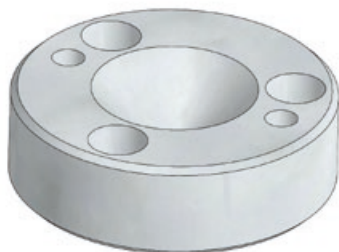
B8 0604 0345936

MERCEDES-BENZ CODE FORM

B8 0604 0372845 A

B8 0604 0345936 B

LOCATING CONE - KEGELAUFSATZ - CONO DI CENTRAGGIO



Notes

Material: 100Cr6 - **HRC:** 63÷65

Only for replacement
Nur für Reparatur
Solo per riparazione



MERCEDES-BENZ CODE

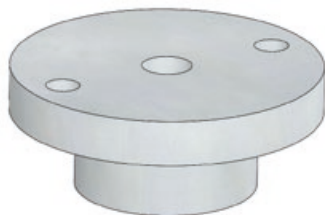
B8 0624 0331203

MERCEDES-BENZ CODE

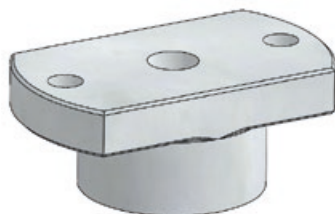
B8 0624 0331203

Standard
Mercedes-Benz

LOCATING CONE - KEGELAUFSATZ - CONO DI CENTRAGGIO



FORM A



FORM B

Notes

Material: 16MnCr5 - **HRC:** 60÷64



MERCEDES-BENZ CODE

B8 0624 0345931

MERCEDES-BENZ CODE

FORM

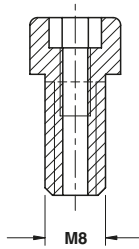
B8 0624 0372844

A

B8 0624 0345931

B

SPACER - ABSTIMMSCHRAUBE - DISTANZIALE



Notes
DIN 912 8.8

STOCK



MERCEDES-BENZ CODE
B8 1001 0333539

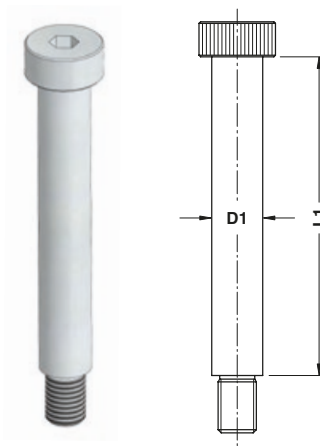
MERCEDES-BENZ CODE
B8 1001 0333539

COLLAR SCREW - SCHULTER PASSSCHRAUBE - VITE CON COLLETO

Notes

DIN 898 cl. 12.9

STOCK



Standard
Mercedes-Benz



MERCEDES-BENZ CODE

B8 1013 0789539

MERCEDES-BENZ CODE	D1	L1	MERCEDES-BENZ CODE	D1	L1	MERCEDES-BENZ CODE	D1	L1
B8 1013 0528837	16	70	B8 1013 0528845	20	60	B8 1013 0789540	16	35
B8 1013 0528838	16	80	B8 1013 0528846	20	70	B8 1013 0789542	16	40
B8 1013 0528839	16	90	B8 1013 0528847	20	80	B8 1013 0789543	16	45
B8 1013 0528840	16	100	B8 1013 0528848	20	90	B8 1013 1018326	8	16
B8 1013 0528841	16	120	B8 1013 0528849	20	100	B8 1013 1043713	8	50
B8 1013 0528842	16	60	B8 1013 0528850	20	120	B8 1013 1060773	12	30
B8 1013 0528843	16	50	B8 1013 0571679	16	30			
B8 1013 0528844	20	50	B8 1013 0789539	16	25			

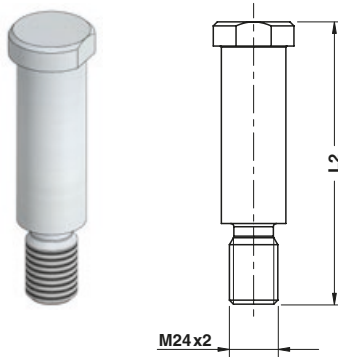
RETAINER BOLT - HALTEBOLZEN - TIRANTE

Notes

Material: 42CrMo4
1000±1200 N/mm²

Only for replacement
Nur für Reparatur
Solo per riparazione

STOCK

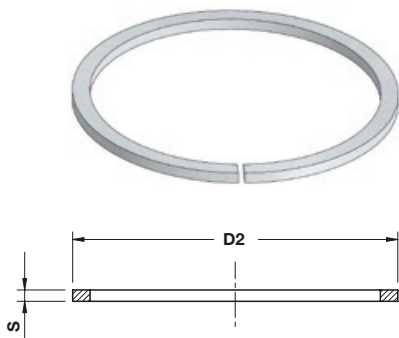


MERCEDES-BENZ CODE

B8 1013 0331113

MERCEDES-BENZ CODE	L2	MERCEDES-BENZ CODE	L2	MERCEDES-BENZ CODE	L2
B8 1013 0331112	140	B8 1013 0331117	240	B8 1013 0331930	120
B8 1013 0331113	160	B8 1013 0331118	260	B8 1013 0534378	320
B8 1013 0331114	180	B8 1013 0331119	280	B8 1013 0534379	340
B8 1013 0331115	200	B8 1013 0331120	300		
B8 1013 0331116	220	B8 1013 0331929	100		

POST RING - SPRENGRING - ANELLO PER COLONNA



MERCEDES-BENZ CODE
B8 1087 0333185

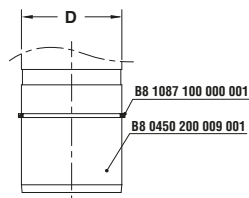
MERCEDES-BENZ CODE	D	D2	S	MERCEDES-BENZ CODE	D	D2	S	MERCEDES-BENZ CODE	D	D2	S
B8 1087 0333184	40	43	1,5	B8 1087 0333187	80	83,2	2	B8 1087 0333190	160	164,3	2,5
B8 1087 0333185	50	53	1,5	B8 1087 0333188	100	103,8	2,5				
B8 1087 0333186	63	66	1,5	B8 1087 0333189	125	128,8	2,5				

Notes

Material: EN 10270

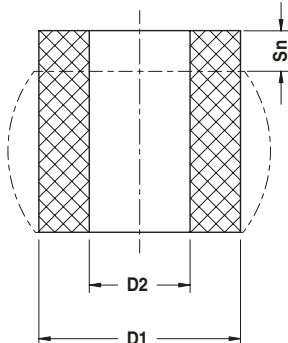
STOCK

Application example



Standard Mercedes-Benz

ELASTOMER SPRING - ELASTOMERFEDER - MOLLA IN ELASTOMERO



Sn max = 24 mm

Notes

Material: Elastomer 92 SH
Only for replacement
Nur für Reparatur
Solo per riparazione

STOCK



MERCEDES-BENZ CODE
B8 1123 0377012

MERCEDES-BENZ CODE	D1	D2
B8 1123 0332947	63	33
B8 1123 0332948	80	33
B8 1123 0377012	80	40
B8 1123 0377013	90	40

LIFTING BRACKET VDI 3366 - TRAGZAPFEN VDI 3366 - STAFFA DI SOLLEVAMENTO VDI 3366

Notes

Material: CK45 - 700÷800 N/mm²
Screws not included

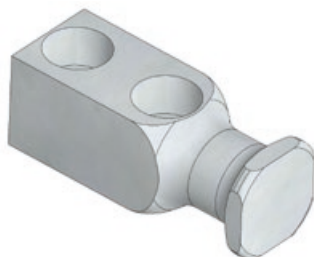


Respect the max load
Maximale Nutzlast beachten
Rispettare il carico Max

WARNING - ACHTUNG - ATTENZIONE:
For safety reason, please consider always that the weight of the die has to be supported by just 2 lifting brackets.

Aus Sicherheitsgründen stets berücksichtigen, dass zwei Tragzapfens das gesamte Werkzeuggewicht tragen müssen.

Per ragioni di sicurezza, considerare sempre che il peso dello stampo deve essere sopportato da 2 sole staffe.



FORM A



FORM B

	MERCEDES-BENZ CODE
	B8 1240 0333079

MERCEDES-BENZ CODE	Max load (kg)	Max die weight (kg)	FORM	MERCEDES-BENZ CODE	Max load (kg)	Max die weight (kg)	FORM
B8 1240 0333078	320	640	A	B8 1240 0333083	5000	10000	A
B8 1240 0333079	630	1260	A	B8 1240 0333084	8000	16000	B
B8 1240 0333080	1250	2500	A	B8 1240 0333085	12500	25000	B
B8 1240 0333081	2000	4000	A	B8 1240 0333086	20000	40000	B
B8 1240 0333082	3200	6400	A				

LIFTING PIN - TRAGBOLZEN MIT FALLRINGSICHERUNG - PERNO DI SOLLEVAMENTO

Notes

Material: 42CrMo4 + QT



Respect the max load
 Maximale Nutzlast beachten
 Rispettare il carico Max

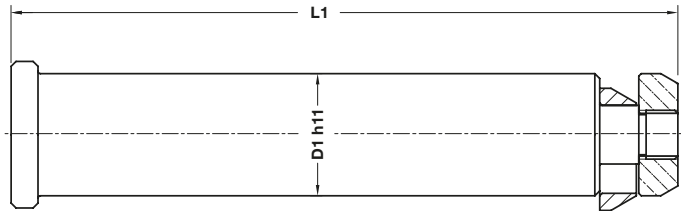
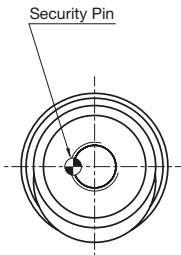
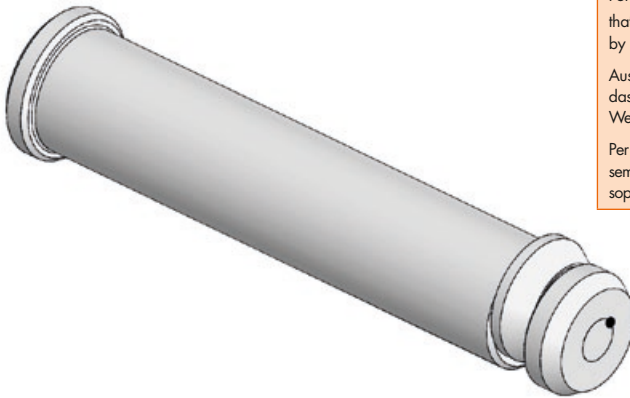
WARNING - ACHTUNG - ATTENZIONE:

For safety reason, please consider always that the weight of the die has to be supported by just 2 lifting pins.

Aus Sicherheitsgründen stets berücksichtigen, dass zwei Tragbolzen das gesamte Werkzeuggewicht tragen müssen.

Per ragioni di sicurezza, considerare sempre che il peso dello stampo deve essere sopportato da 2 soli perni.

Standard Mercedes-Benz



MERCEDES-BENZ CODE

B8 2002 0370694

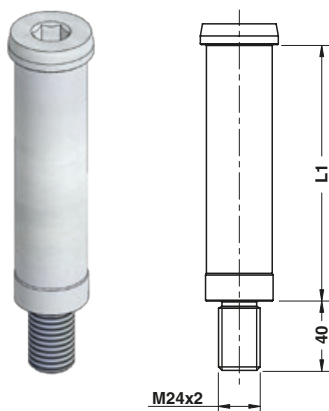
MERCEDES-BENZ CODE	Max load (kg)	Max die weight (kg)	L1	D1
B8 2002 0370693	3200	6400	175	32
B8 2002 0370694	5000	10000	225	40
B8 2002 0537341	8000	16000	273	50
B8 2002 0537342	12500	25000	347	63
B8 2002 0537343	31500	63000	422	76

RETAINER BOLT - HALTEBOLZEN - TIRANTE

Notes

Material: 42CrMo4
1000±1200 N/mm²

STOCK

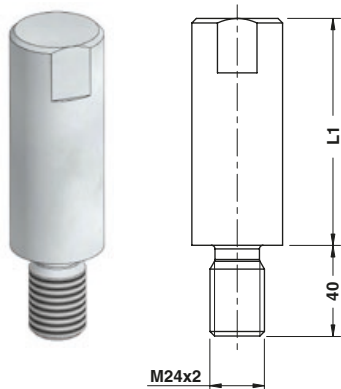


MERCEDES-BENZ CODE

B8 2002 0373390

MERCEDES-BENZ CODE	L1	MERCEDES-BENZ CODE	L1	MERCEDES-BENZ CODE	L1
B8 2002 0373389	48	B8 2002 0373405	148	B8 2002 0373412	248
B8 2002 0373390	68	B8 2002 0373406	168	B8 2002 0373413	268
B8 2002 0373391	88	B8 2002 0373407	188	B8 2002 0373414	288
B8 2002 0373392	108	B8 2002 0373409	208		
B8 2002 0373393	128	B8 2002 0373410	228		

PIN - DRUCKBOLZEN - PERNO



Notes

Material: 42CrMo4
 1000÷1200 N/mm²
 Only for replacement
 Nur für Reparatur
 Solo per riparazione

STOCK



MERCEDES-BENZ CODE

B8 2002 0528328

MERCEDES-BENZ CODE

L1

B8 2002 0528327	100
B8 2002 0528328	120
B8 2002 0528329	140
B8 2002 0528330	160
B8 2002 0528331	180
B8 2002 0528332	200
B8 2002 0528333	220
B8 2002 0528334	240
B8 2002 0528335	260

Standard
Mercedes-Benz

PIN - ANKERBOLZEN - PERNO



Notes

Material: 42CrMo4

STOCK



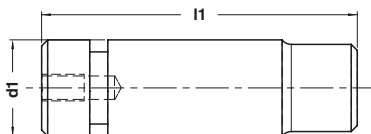
MERCEDES-BENZ CODE

B8 2002 0332361

MERCEDES-BENZ CODE

B8 2002 0332361

PAD RETAINER PIN - STECKBOLZEN - PERNO DI ARRESTO



Notes

Material: CK45 - 800÷1000 N/mm²

STOCK

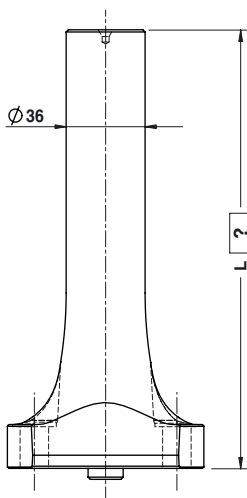


MERCEDES-BENZ CODE

B8 2002 0333932

MERCEDES-BENZ CODE	d1	l1
B8 2002 0333400	32	122
B8 2002 0332932	40	139
B8 2002 0332933	50	167

AIR PIN - DRUCKBOLZEN - CANDELA



L max = 250

Notes

Material: CK45 - 800÷1000 N/mm²

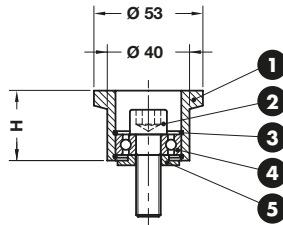
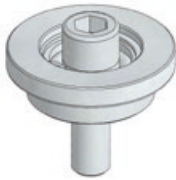


MERCEDES-BENZ CODE

B8 2002 1152052

MERCEDES-BENZ CODE	L
B8 2002 1152051	150
B8 2002 1152052	175
B8 2002 1152053	200
B8 2002 1152054	225
B8 2002 1152055	250

COIL GUIDE ROLLER - FÜHRUNGSROLLE - GUIDA NASTRO



Notes

- 1 **Material:** 16MnCr5 - HRC: 55÷58
- 2 M12x40 DIN 472
- 3 I32 DIN 472
- 4 6201 2Z VA DIN 625
- 5 **Material:** CK45



MERCEDES-BENZ CODE

B8 7007 0332935

MERCEDES-BENZ CODE

H

B8 7007 0332934

17

B8 7007 0332935

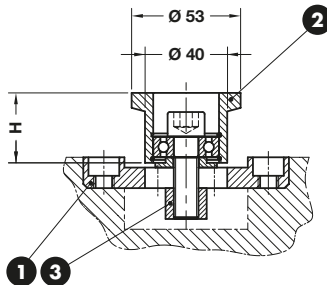
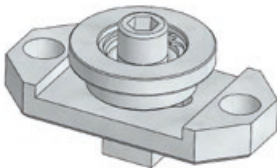
34

B8 7007 0530090

80

Standard
Mercedes-Benz

COIL GUIDE ROLLER - FÜHRUNGSROLLE - GUIDA NASTRO



Notes

- 1 **Material:** St37
- 2 B8 7007 0332934
B8 7007 0332935
B8 7007 0530090
- 3 **Material:** CK45



MERCEDES-BENZ CODE

B8 7007 0332632

MERCEDES-BENZ CODE

H

B8 7007 0332631

17

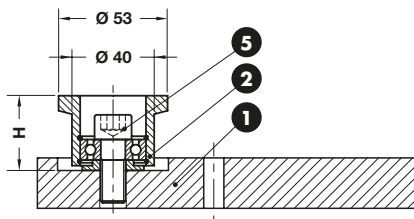
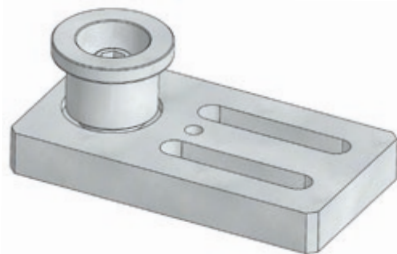
B8 7007 0332632

34

B8 7007 0557701

80

COIL GUIDE ROLLER - FÜHRUNGSROLLE - GUIDA NASTRO



Notes

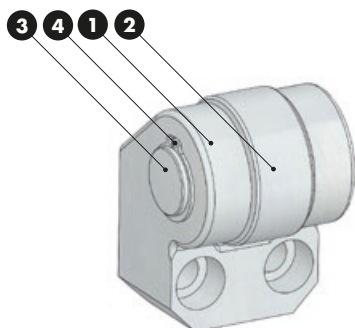
- 1 Material: St37
- 2 B8 7007 0332935
B8 7007 0530090
- 5 M12x25 DIN 472



MERCEDES-BENZ CODE
B8 7007 0530089

MERCEDES-BENZ CODE	H
B8 7007 0530088	34
B8 7007 0530089	80

CAM ROLLER - ROLLENBOCK - SUPPORTO CON RULLO



Notes

- 1 Material: 42CrMo4
- 2 NUTR 2552
- 3 Material: X210Cr12 - HRC 60±62
- 4 E25 DIN 471



MERCEDES-BENZ CODE
B8 7466 0333319

MERCEDES-BENZ CODE
B8 7466 0333319